

INSTALLER: LEAVE THESE INSTRUCTIONS WITH THE HOMEOWNER.

WALL CONTROL COMPATIBILITY

THIS WALL CONTROL CAN BE USED WITH THE FOLLOWING VENTILATION UNITS:
 VENMAR AVS SOLO, DUO, HE, COMPACT, CONSTRUCTO 1.0*, HRV EKO 1.5 AND HRV NOVOFIT 1.0
 VĀNEE GOLD SERIES, HE*, 60H*, HRV 90H-V ECM AND 60H NOVO+
 IT IS NOT COMPATIBLE WITH OTHER VENTILATION UNITS.

*CONSTRUCTO 1.0 AND VĀNEE 60H BUILT IN AUGUST 2008 AND LATER, AND VĀNEE HE BUILT IN JULY 2006 OR LATER. THE DATE CODE ON THE UNIT IS PART OF ITS 13-DIGIT SERIAL NUMBER. FOR EXAMPLE, THE SERIAL NUMBER XXXX0708XXXXX, WHERE 07 IS THE YEAR AND 08 THE MONTH (AUGUST); THE DATE CODE IS ALWAYS THE FIFTH, SIXTH, SEVENTH AND EIGHTH DIGITS.

WALL CONTROL INSTALLATION

WARNING

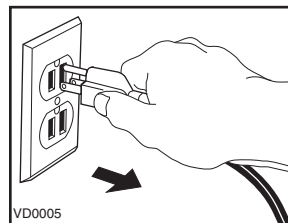
Always disconnect the unit before making any connections. Failure in disconnecting power could result in electrical shock or damage of the wall control or electronic module inside the unit.

CAUTION

Failure to comply with the following can cause erratic operation of the unit:

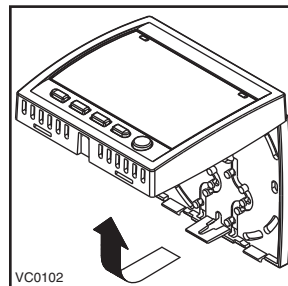
- Never install more than one optional wall control per unit.
- Keep control low voltage wiring at least 1 foot (305 mm) away from motors, lighting ballast, light dimming circuit and power distribution panel. Do not route control wiring alongside house power wiring.
- Ensure the wires are securely connected.

1. UNPLUG THE VENTILATION UNIT FROM POWER SOURCE.



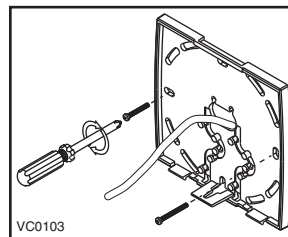
VD0005

2. ROUTE THE CABLE FROM THE UNIT TO A CONVENIENT LOCATION FOR THE WALL CONTROL.



VC0102

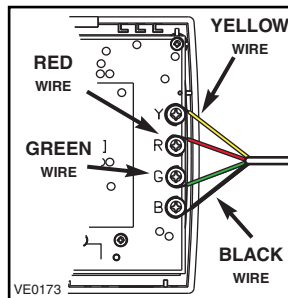
3. DETACH THE FRONT MODULE FROM THE MOUNTING PLATE BY PULLING THE BOTTOM PART.



VC0103

4. RUN THE CABLE (4 WIRES) THROUGH THE CENTRAL OPENING OF THE MOUNTING PLATE AND MOUNT THIS PLATE TO THE WALL USING SCREWS (NOT INCLUDED). IF NEEDED, USE WALL ANCHORS (NOT INCLUDED).

5. SPLICE BACK THE END OF THE CABLE TO ACCESS THE 4 WIRES. STRIP THE END OF EACH WIRE. CONNECT EACH WIRE TO ITS CORRESPONDING TERMINAL ON THE BACK OF THE FRONT MODULE: YELLOW WIRE TO "Y", RED WIRE TO "R", GREEN WIRE TO "G" AND BLACK WIRE TO "B".

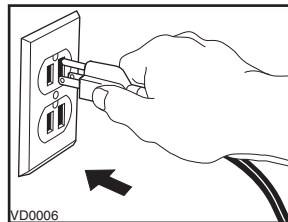


VE0173

CAUTION

Be careful not to pinch wires when reinstalling the front module on its back plate.

6. REINSTALL THE FRONT MODULE OVER THE BACK PLATE.



VD0006

7. PLUG THE VENTILATION UNIT IN POWER SOURCE.

BOOTING SEQUENCE

AT ITS VERY START-UP, THE WALL CONTROL WILL PERFORM A BOOTING SEQUENCE BEFORE BEING READY TO OPERATE. THE BOOTING SEQUENCE IS DONE WHEN THE HOUR DISPLAY IS FLASHING.

POWER FAILURE

AFTER A POWER FAILURE, THERE IS ALSO A BOOTING SEQUENCE; ONCE DONE, THE WALL CONTROL RETURNS TO ITS ORIGINAL SETTINGS. HOWEVER, IF THE POWER FAILURE DURATION IS MORE THAN 4 HOURS, THE WALL CONTROL LOOSES ONLY ITS DAY AND TIME SETTINGS MEMORY (THESE MUST BE REPROGRAMMED). THE REST OF THE PREFERENCES AND SETTINGS IS KEPT IN PERMANENT MEMORY.

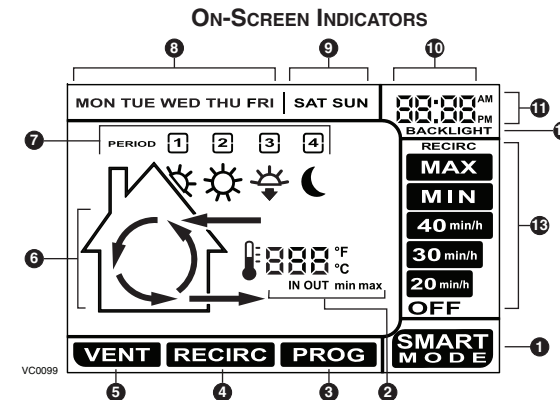
OUTSIDE TEMPERATURE READING

AT ITS VERY START-UP OR AFTER A POWER FAILURE, IT TAKES SOME MINUTES BEFORE THE OUTSIDE TEMPERATURE APPEARS ON SCREEN. THE DELAY DURATION DEPENDS ON WHICH OPERATION MODE THE WALL CONTROL IS SET. THE SHORTEST DELAY IS OBTAINED WHEN THE WALL CONTROL IS SET ON MIN OR MAX IN VENT MODE.

ERROR CODES

IF THERE IS A PROBLEM WITH THE WALL CONTROL, AN ERROR CODE WILL APPEAR ON THE SCREEN, IN THE TEMPERATURE INDICATORS ZONE (SEE ON-SCREEN INDICATORS, IN FOLLOWING SECTION). IT COULD BE E1, E3, ETC. IF THIS SITUATION OCCURS, PLEASE CALL YOUR INSTALLER.

WALL CONTROL USE



- SMART MODE.** ENTIRELY AUTOMATIC MODE OPTIMIZING THE VENTILATION.
- TEMPERATURE INDICATORS.**
- PROGRAM MODE.** ALLOWS TO PROGRAM THE DESIRED VENTILATION ACCORDING TO THE PERIOD OF THE DAY.
- RECIRCULATION MODE.** MANUAL MODE PERFORMING AIR RECIRCULATION INSIDE THE HOUSE.
- VENTILATION MODE.** MANUAL MODE PERFORMING AIR EXCHANGE WITH THE OUTSIDE.
- ANIMATED ARROWS** SHOWING VENTILATION STATUS (VENTILATION OR RECIRCULATION).
- PERIODS OF THE DAY** (MORNING, DAY, EVENING AND NIGHT).
- WEEK DAYS.**
- WEEK-END DAYS.**
- HOOR DISPLAY.**
- AM OR PM DISPLAY.**
- APPEARS ONLY WHEN SETTING** BACKLIGHT PREFERENCES.
- VENTILATION / RECIRCULATION SPEEDS** AND PROGRAMMING OPTIONS.

SETTING PREFERENCES

PRESS ON **MODE/PREF** KEY (D) FOR 3 SECONDS.

NOTE: YOU CAN EXIT PREFERENCES SETTING BY PRESSING ON **MODE/PREF** KEY (D) FOR 3 SECONDS ANY TIME IN THE PROCESS, OR WAIT 60 SECONDS. THE MODIFIED VALUES WILL BE KEPT IN MEMORY.

WHAT WILL YOU SEE

IF THE CONTROL WILL BE SET FOR THE VERY FIRST TIME, THE CURRENT DAY WILL BE THE FIRST SETTING TO BE MADE; **MON** (FOR MONDAY) WILL FLASH ON SCREEN. IF THE CONTROL WAS PREVIOUSLY SET UP, WHEN SETTING PREFERENCES, THE CONTROL RETURNS TO THE LAST PREFERENCE CHOSEN ON PREVIOUS SETTING. WHILE SETTING PREFERENCES, THE CORRESPONDING SETTING VALUE FLASHES (E.G.: WHILE SETTING CURRENT HOUR, HOUR IS FLASHING).

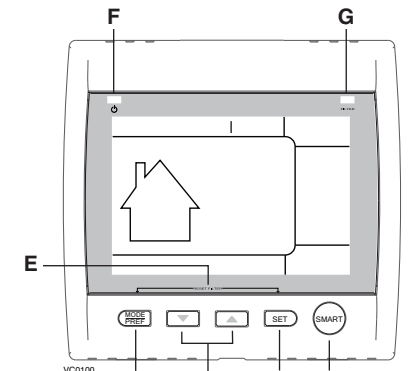
HOW TO PROCEED

FOR EVERY SETTINGS IN TABLE BELOW:

- Use TO SELECT VALUE.
- Press **SET** KEY (B) TO CONFIRM THE SELECTED PREFERENCE AND GO TO NEXT SETTING.

SETTING	AVAILABLE VALUE	DEFAULT OPTIONS
CURRENT DAY	MON/TUE/WED/THU/FRI/SAT/SUN	MON
HOOR DISPLAY	12:00 AM OR 24:00	12:00 AM
CURRENT HOUR	FROM 0 TO 12 OR 24	12
CURRENT MINUTE	FROM 00 TO 59	00
TEMPERATURE UNIT	°C OR °F	°C
INSIDE TEMPERATURE DISPLAY	ON OR OFF	ON
MINIMUM OUTSIDE TEMPERATURE FOR AIR EXCHANGE*	-40°C TO 0°C OR -40°F TO 32°F	-25°C OR -13°F
MAXIMUM OUTSIDE TEMPERATURE FOR AIR EXCHANGE*	1°C TO 40°C OR 33°F TO 104°F	27°C OR 81°F
*IN PROG OR SMART MODE, THESE LIMIT VALUES ALLOW TO STOP AIR EXCHANGE WITH THE OUTSIDE.		
BACKLIGHT COLOR	BLUE OR GREEN	BLUE
BACKLIGHT DISPLAY	AUTO OR ON	AUTO
AUTO: BACKLIGHT ACTIVATED 10 SECONDS WHEN ANY KEY IS PRESSED. ON: BACKLIGHT ALWAYS ON.		
OFF MODE FOR INTERMITTENT MODE	VENTILATION/RECIRCULATION OR VENTILATION/OFF	VENT/RECIRC.
AFTER A VENTILATION PERIOD, DETERMINES THE SECOND PART OF THE CYCLE (RECIRCULATION OR OFF).		

CASING INDICATORS AND KEYS



- A SMART KEY** ENABLES AND DISABLES THE **SMART MODE**.
- B SET KEY**
 - PRESS 3 SECONDS TO ACCESS SETTING PERIODS FOR **PROGRAM MODE**.
 - CONFIRMS THE CHOSEN OPTION AND GOES TO FOLLOWING SETTING.
 - ADJUST VENTILATION AND RECIRCULATION SPEEDS.
 - ALLOWS TO REVIEW THE PROGRAM'S PERIODS.
 - ADJUST **PREFERENCE** AND **PROGRAM** VALUES.
 - **MODE:** SELECTS WHETHER **VENTILATION MODE**, **RECIRCULATION MODE** OR **PROGRAM MODE**.
 - **PREF:** PUSH 3 SECONDS TO ACCESS **PREFERENCE** SETTINGS.
- C ARROW KEYS**
 - ADJUST VENTILATION AND RECIRCULATION SPEEDS.
 - ALLOWS TO REVIEW THE PROGRAM'S PERIODS.
 - ADJUST **PREFERENCE** AND **PROGRAM** VALUES.
- D MODE/PREF KEY**
 - **MODE:** SELECTS WHETHER **VENTILATION MODE**, **RECIRCULATION MODE** OR **PROGRAM MODE**.
 - **PREF:** PUSH 3 SECONDS TO ACCESS **PREFERENCE** SETTINGS.
- E RESET FILTER KEYS** PRESS ON **B** AND **D** KEYS SIMULTANEOUSLY FOR 5 SECONDS TO TURN OFF (RESET) THE FILTER MAINTENANCE INDICATOR.
- F POWER INDICATOR** ILLUMINATES WHEN THE CONTROL IS OPERATING.
- G FILTER MAINTENANCE INDICATOR** PERFORM FILTERS MAINTENANCE. (REFER TO THE UNIT GUIDE.)

SETTING PERIODS FOR PROGRAM MODE

THE PROGRAM MODE ALLOWS THE USER TO CUSTOMIZE THE OPERATION OF HIS/HER VENTILATION UNIT, FOR WEEK AND WEEKEND DAYS. ALL DAYS ARE DIVIDED IN 4 PERIODS. THE PERIODS STARTING HOUR AND VENTILATION SPEED ARE FACTORY SET (SEE BELOW).

DAILY PERIODS DEFAULT SETTINGS		
PERIOD	STARTING HOUR	MODE
PERIOD 1 (MORNING)	6:00 AM	MIN
PERIOD 2 (DAY)	9:00 AM	20 MIN/H
PERIOD 3 (EVENING)	5:00 PM	MIN
PERIOD 4 (NIGHT)	11:00 PM	20 MIN/H

TO CHANGE THESE VALUES:

- PRESS ON **SET** KEY (B) FOR 3 SECONDS, **PROG** (FOR PROGRAM) WILL APPEAR ON SCREEN, AND WEEK DAYS WILL FLASH.
- NOTE: YOU CAN EXIT PERIODS SETTING BY PRESSING ON **SET** KEY (B) FOR 3 SECONDS ANY TIME IN THE PROCESS, OR WAIT 60 SECONDS.
- Use TO SELECT BETWEEN SETTING WEEK DAYS OR WEEKEND DAYS.
 - Press **SET** KEY (B) TO CONFIRM THE CHOICE, AND GO TO SETTING DAILY PERIOD 1 (**PERIOD 1** WILL APPEAR ON SCREEN, AND HOUR DISPLAY WILL FLASH).
 - Use TO SELECT THE PERIOD STARTING HOUR.
NOTE: TIME CHANGES BY 15 MINUTES INCREMENTS.
 - Press **SET** KEY (B) TO CONFIRM AND GO TO SELECT THE VENTILATION SPEED OR TYPE (WILL FLASH ON SCREEN).
 - Use TO SELECT THE VENTILATION SPEED OR TYPE.
 - Press **SET** KEY (B) TO CONFIRM AND GO TO DAILY PERIOD 2 (**PERIOD 2** WILL APPEAR ON SCREEN, AND HOUR DISPLAY WILL FLASH).

PROCEED AS FOR PERIOD 1 FOR ALL DAILY PERIODS. ONCE THE VENTILATION SPEED OR TYPE FOR DAILY PERIOD 4 HAS BEEN SELECTED:

- Press **SET** KEY (B) TO CONFIRM.
- NOTE: IF THE WEEK DAYS WERE THE FIRST TO BE SET, THE WEEKEND DAYS WILL APPEAR ON SCREEN; BUT IF THE WEEKEND DAYS WERE THE FIRST TO BE SET, THEN THE WEEK DAYS WILL APPEAR ON SCREEN.
(PERIOD 1 WILL APPEAR ON SCREEN, AND HOUR DISPLAY WILL FLASH).
- SET PERIODS AS DESCRIBED ABOVE.